

ATLANTIC BASIN SEASONAL HURRICANE FORECAST



HURRICANE FORECAST INTENSIFIES*

The 2010 Atlantic hurricane season may be more severe than predicted earlier, and consequences are likely to be greater as well, since storm activity of any kind is likely to have an effect on the oil spill in the Gulf.

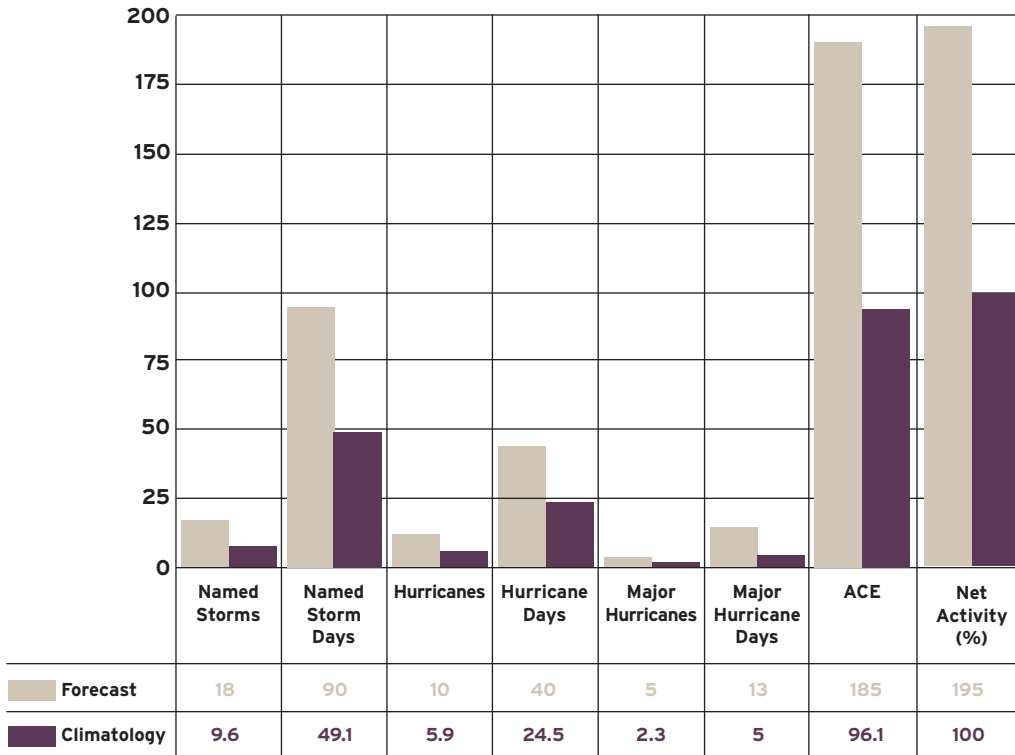
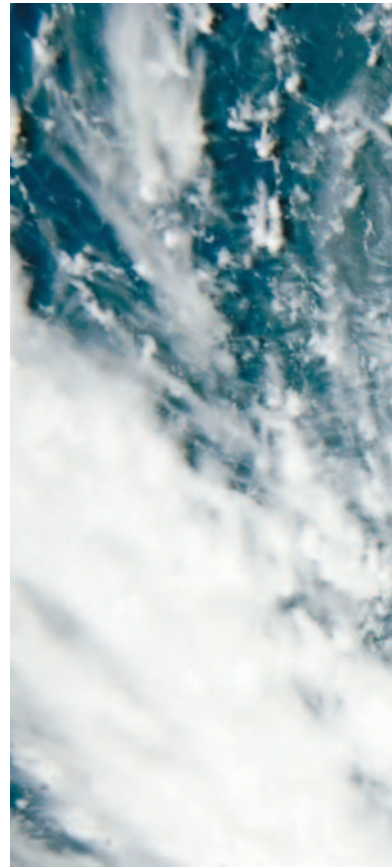
*Source: UPI Science News June 21 2010

TROPICAL CYCLONE SEASONAL FORECAST FOR 2010

	Prediction for 2010 as of June 2	Average
Named Storms (NS)	18	9.6
Named Storm Days (NSD)	90	49.1
Hurricanes (H)	10	5.9
Hurricane Days (HD)	40	24.5
Major Hurricanes (MH) (Category 3-4-5)	5	2.3
Major Hurricane Days (MHD)	13	5.0
Accumulated Cyclone Energy (ACE)	185	96.1
Net Tropical Cyclone Activity (NTC)	195	100%

The forecast has been increased from their April forecast based on an extended-range early June statistical prediction scheme that utilizes 58 years of past data. They expect the current trend from El Niño to neutral conditions will persist and that weak La Nina conditions may develop leading to reduced levels of vertical wind shear. In addition, sea surface temperatures in both the tropical and North Atlantic are running at near record-warm levels.

YEAR 2010 HURRICANE PREDICTION (FORECAST VS. CLIMATOLOGY)



LANDFALL PREDICTIONS

Below are the probabilities for at least one major (category 3-4-5) hurricane to make landfall.

- Entire U.S. coastline – 76% (average for last century is 52%)
- U.S. East Coast including Florida peninsula – 51% (average for last century is 31%)
- Gulf Coast from the Florida Panhandle westward to Brownsville – 50% (average for last century is 30%)
- Tracking into the Caribbean (10-20° N, 60-88° W) – 65% (average for last century is 42%)

IN ADDITION TO CSU, VARIOUS OTHER FORECASTERS AND/OR ORGANIZATIONS HAVE MADE PREDICTIONS FOR THE 2010 HURRICANE SEASON:

Organization	URL	Named Storms	Hurricanes	Intense Hurricanes
Penn State Univ	http://www.essc.psu.edu/essc_web/research/Hurricane2010.html	23		
UKMET GloSea Dynamical Model		20		
NOAA	http://www.noaanews.noaa.gov/stories2010/20100527_hurricaneoutlook.html	14-23	8-14	3-7
Tropical Storm Risk (TSR)	http://tropicalstormrisk.com/	19.1	10.4	4.8
Florida State U. Dynamical Model		17	10	
AccuWeather.com		18-21	6	
Willis Research Network (WRN)/UK MET Office	http://www.metoffice.gov.uk/	22		
Weather Services International (WSI)	http://www.wsi.com	20	11	3