



A NEW TEAM, A FRESH APPROACH

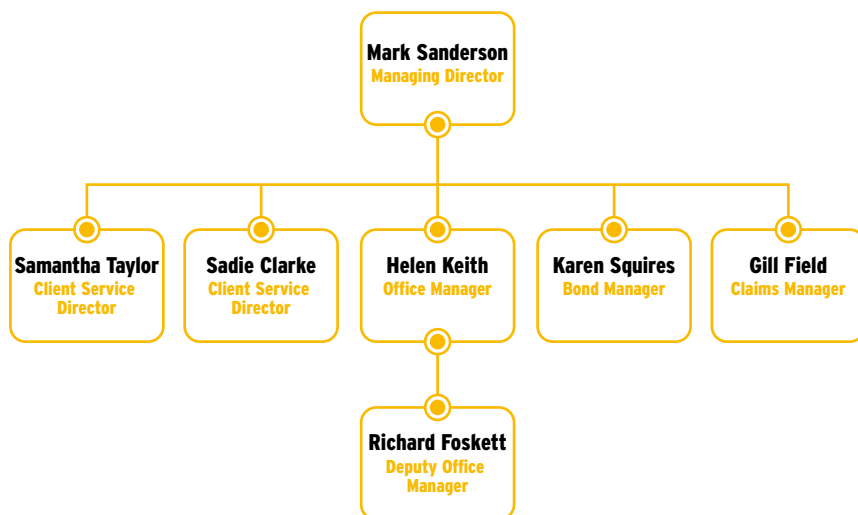
WILLIS INSOLVENCY SERVICES

Willis

THE INSOLVENCY SERVICE TEAM

The Willis Insolvency team are dedicated skilled professionals, with extensive knowledge and experience in insurance and the insolvency market. Our team is lead by Mark Sanderson, Managing Director who is supported by Samantha Taylor, Client Service Director, Midlands/South and Sadie Clarke, Client Service Director, North. Collectively we are responsible for delivering the highest level of service to all our clients.

In turn, we are supported by our placement team in Reading. Our Open Cover Facility is managed by Helen Keith, Office Manager who has over 20 years industry experience, together with a deputy, Richard Foskett, with over 20 years corporate insurance experience. Karen Squires leads our long established Bond Team and Gill Field is our in-house Claims Manager with over 20 years claims experience.



OPEN COVER FACILITY

Our market leading facility offers a range of insurances, broad-based wordings and competitive premiums. Our scheme offers up to 30 days automatic cover from appointment and our team of skilled insurance professionals can advise you on any specific insurance requirements.

Willis is a global insurance broker with a wealth of resource and expertise available for our clients including risk management and health and safety consultancy. We also have trade sector practice groups within Willis that can be utilised for more specific risks.

BONDS

Many of our clients on our open cover facility are also bonded with us. We are a market leading bond provider. Our bonds attract a one-off premium payment which enables us to effectively manage the time and administrative burden on you. Our clients can also receive training vouchers each year they are bonded with us, which may be used to take advantage of training courses provided by R3.

PROFESSIONAL INDEMNITY AND OFFICE COMBINED

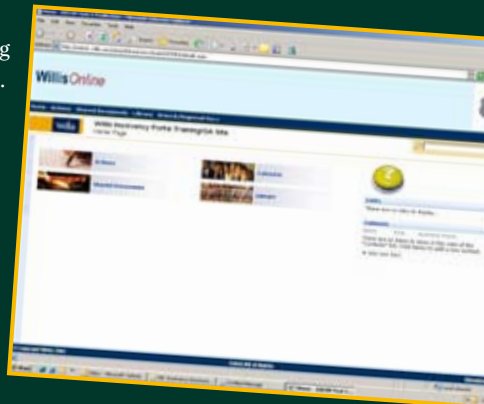
We also offer a range of services to Insolvency Practitioners including Professional Indemnity insurance, Office Combined insurance and Motor insurance.

OUR BESPOKE WILLIS ONLINE SYSTEM HAS BEEN ADAPTED SPECIFICALLY FOR THE INSOLVENCY MARKET.

WILLIS ONLINE

We have launched our new IT system which provides online access for cases insured through our Open Cover Facility. Our bespoke Willis Online system has been adapted specifically for the insolvency market:

- Appointments can be viewed online providing you with real-time management information.
- Insurance questionnaires can be completed and submitted online.
- Automatic acknowledgements by email will be sent to you upon notification of a new appointment and upon receipt of completed questionnaires, therefore supporting your internal compliance requirements.



Mark Sanderson

Managing Director

Mobile: +44 (0)7771 678 571

Email: sandersonm@willis.com

Samantha Taylor

Client Service Director – Midlands/South

Mobile: +44 (0)7956 661 162

Email: samantha.taylor@willis.com

Sadie Clarke

Client Service Director – North

Mobile: +44 (0)7943 825 923

Email: clarkesj2@willis.com

Willis Limited

The Willis Building

51 Lime Street

London EC3M 7DQ

United Kingdom

Tel: +44 (0)20 3124 6000

Fax: +44 (0)20 3124 8223

The Anchorage

34 Bridge Street

Reading RG1 2LU

33 Park Place

Leeds LS1 2RY

30 St Paul's Square

Birmingham B3 1QJ

www.willis.com

Willis Limited, Registered number: 181116 England and Wales.

Registered address: 51 Lime Street, London, EC3M 7DQ.

A Lloyd's Broker. Authorised and regulated by the Financial Services Authority for its general insurance mediation activities only.

FP893/8270/03/10