

Claims and Risk Control

Willis

Willis Advantages – Property Risk Control

January 2007

All organizations seek to reduce their total cost of risk. As a method for achieving that goal, risk control offers a distinct advantage over purely financial mechanisms. Non-transactional risk control measures reduce the cost of risk in three crucial ways:

- Preventing losses
- Mitigating loss potential
- Recovering quickly from losses that do occur

When a business manages its risk exposures efficiently, the positive effect goes beyond loss reduction; the real benefit is increased capital available to invest in the growth of the company. Improving the balance between risk and opportunity is the main objective of the Willis Property Risk Control Group. This protects a company's bottom line, enables greater profitability and enhances competitive advantage.



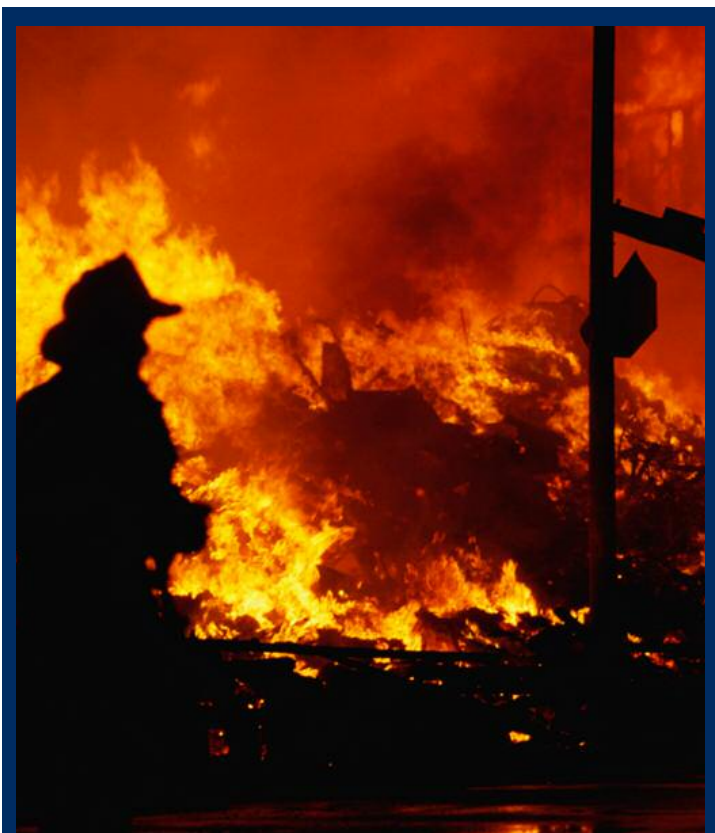
What Willis Can Do for You

- **Business Continuity Planning.** Assist in the development of effective pre-emergency, crisis management and business recovery planning
- **CAT Exposure Modeling and Analysis.** Determine the probability and severity of loss potential due to natural catastrophic exposures such as wind, earthquake and flood
- **Hurricane Tracking Service.** Twice daily, real-time tracking and notification of potential and imminent hurricane strikes to your property portfolio along with loss mitigation suggestions
- **Business Interruption Analyses.** Determine fundamental bottlenecks, interdependencies and supply chain management exposures
- **Project Management.** Participate in new construction or renovation planning with your technical and financial personnel to ensure informed decisions in the capital budgeting process
- **Business Impact Analysis.** Conduct in-depth exposure surveys at your key facilities to evaluate maximum loss potentials (PML/ MFL) associated with property perils
- **Insurer Mediation.** In all areas of property risk control engineering
 - Alternative performance-based engineering solutions to help mitigate exposure
 - Significant loss investigations
 - Facilitate the coordination of jurisdictional boiler and machinery inspections

Contact

For more information on Willis Property Risk Control Engineering services, contact your Willis Client Advocate® or Joe Stavish, PE, North American Property Risk Control Practice Leader, by phone at 800 862 1441 or via email at stavish_jc@willis.com

- **Insurance Program Marketing.** Provide technical assistance to our Client Advocates and brokers in your strategic insurance marketing plan
- **Property Valuation.** Provide guidance in confirming building replacement cost valuations
- **Due Diligence.** New building site selection or business acquisition process
- **Corporate Resource.** Serve as a technical resource for your risk control engineering concerns, as well as provide assistance in the development or updating of corporate property loss prevention programs, fire safety procedures and pre-emergency plans
- **Risk Exposure Database.** Our STRIPESSM proprietary software converts data into knowledge that can be used to effectively manage corporate risks:
 - Location data
 - COPE info
 - Recommendation analysis and tracking
 - Location Quality Rating System



Willis Advantages

Our Glocal Approach

Willis has a global network of property risk control consultants who work in a seamless and unified manner anywhere in the world our clients have a need.

Our Client Advocate Model

Willis property risk control consultants are an important part of your service team, integrating our in-depth knowledge of your exposures and business risk strategy into a successful program marketing strategy in the global marketplace.

Our People

Our property risk control consultants have BS degrees in engineering and many have MBAs. Most have professional engineering licenses and various other professional technical accreditations, as well as broker licenses. We average more than 20 years' experience. Our client-focused servicing is driven by the desire to do the very best job possible for our clients.